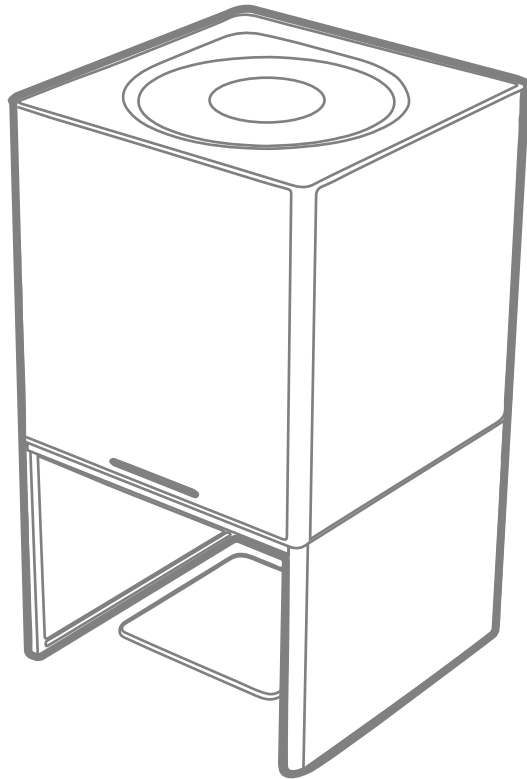


# PIRATE3D

The World's Friendliest 3D Printer

## BUCCANEER

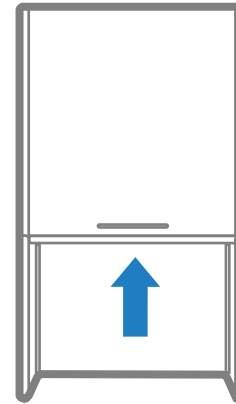


## QUICK START GUIDE

1

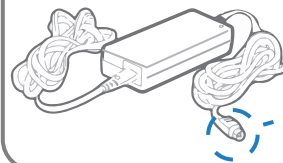
Use a pair of scissors to cut the three (3) cable ties holding the extruder in place.

Please ensure the extruder has been released before proceeding to the next step.



2

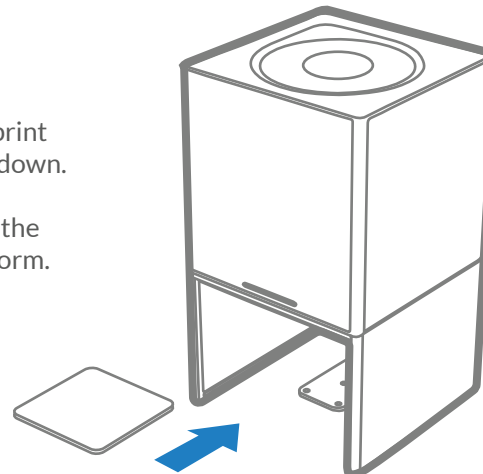
Plug in & Power on the Buccaneer.



3

Wait for the print bed to lower down.

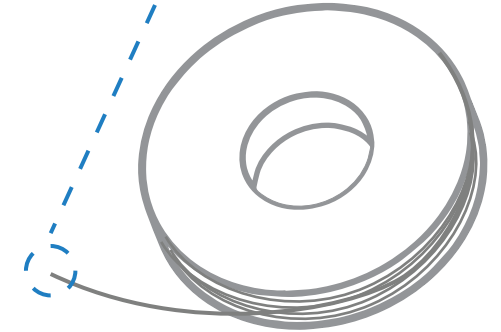
Place and fix the printing platform.



4

Remove the filament from it's packaging.

Prepare the filament by cutting the end at sharp, 45 degress angle.



5

Push filament into filament feeder until you feel **strong resistance**.

It takes about **15 seconds** to push all the way in.

